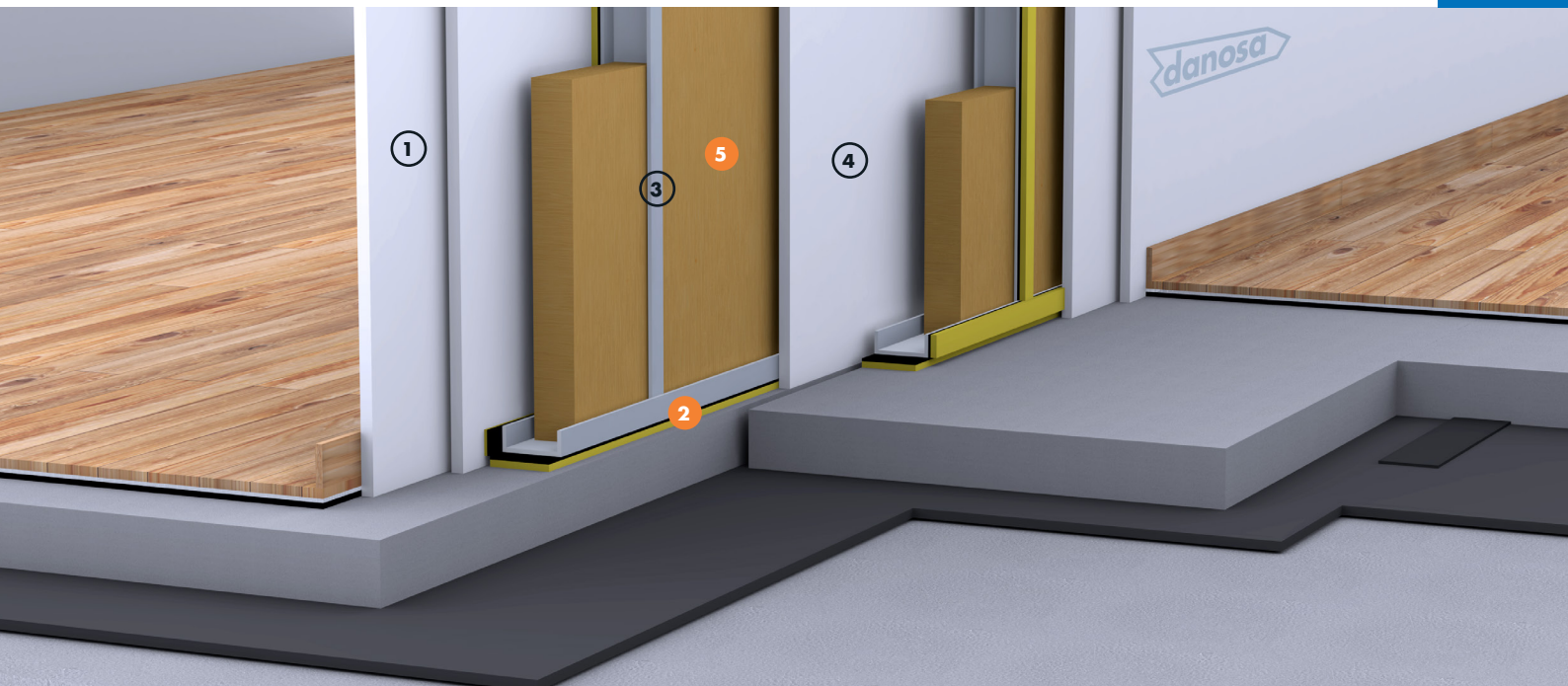


# SEPARATING WALL WITH DOUBLE PLASTERBOARD WALL



Acoustic insulation: Rock wool / Cross-linked polyethylene with acoustic membrane



NOISE PROTECTION  
**FONODAN® 50**

NOISE PROTECTION  
**ROCDAN®**

## ADVANTAGES

- Airborne noise insulation  $D_nT_w > 50$  dB
- Plasterboard system with improved structure that decreases its critical frequency
- Absorbent at medium and high frequencies
- The acoustic band improves the loudness of the partition
- The fifth board ensures the tightness of the system to recessed installations
- Its thermal and acoustic insulation capacity can be improved by increasing the thickness of the structure and rock wool
- Light system better for structural strength with low thickness and faster execution

## APPLICATION AREAS

- Public or private residential buildings
- Public buildings like hotels
- Teaching buildings: schools, universities, nurseries
- Sanitary buildings: hospitals, outpatients, health centers, residences
- Administrative and corporate buildings
- Auditoriums, theaters, music schools: teaching classrooms

## LEGEND

Partition wall:

- ① 12.5 mm double plasterboard
- ② Acoustic insulation FONODAN® 50
- ③ Plasterboard structure
- ④ 15 mm plasterboard
- ⑤ ROCDAN® 231/40 acoustic insulation

# SEPARATING WALL WITH DOUBLE PLASTERBOARD WALL



Acoustic insulation: Rock wool / Cross-linked polyethylene with acoustic membrane

## TECHNICAL DETAILS

Function	Product	Description	Property	Value
Soundproofing and anti-acoustic insulation	<b>FONODAN® 50</b>	Cross-linked polyethylene foam and high-density membrane.	$\Delta R_w$	3 dBA
Acoustic insulation absorbent at medium and high frequencies	<b>ROCDAN® 231/40</b>	Rock wool panel.	$R_w$	40 - 61 dBA

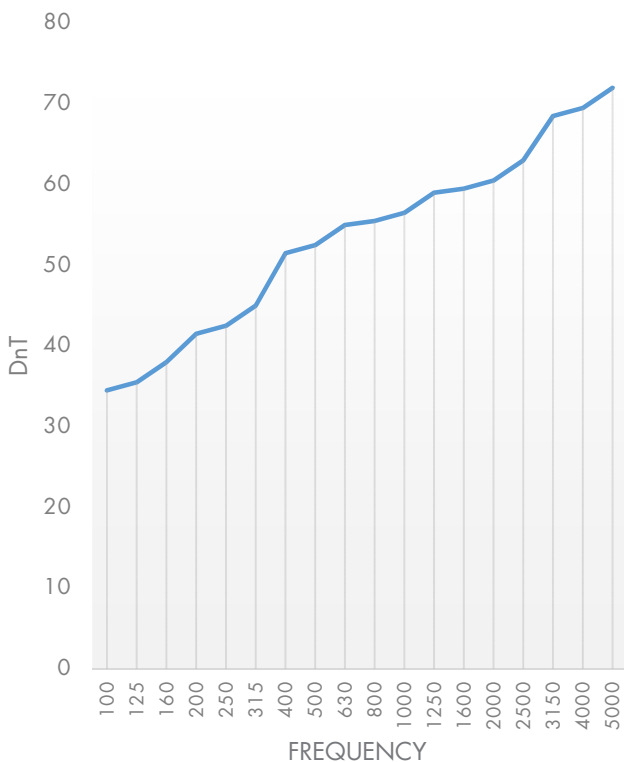
Note: This sheet is included in an acoustic box-in-box system.

## APPLICATION METHOD

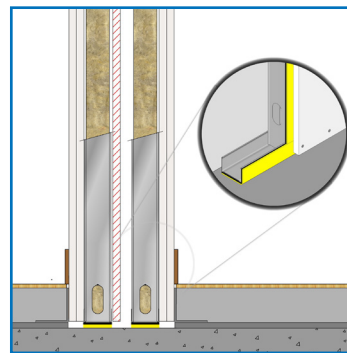
Acoustic insulation of plasterboard separating wall formed by: Double plasterboard of 12.5 mm thickness fixed by screw to the structure of 50 mm thick, improved in the union with the structural elements and between profiles and plasterboards, with self-adhesive anti-resonant tapes, FONODAN® 50 and absorbent material in its interior based on rock wool of 70 kg/m<sup>3</sup> density, ROCDAN® 231/40; 15 mm thick plasterboard fixed with screw to the 1st structure; separated

at least 1 cm from the 15 mm plasterboard, placement of the second improved structure at the junction with the structural elements and between profiles and plasterboards with self-adhesive anti-resonant bands, FONODAN® 50 and absorbent material in its interior based on rock wool of 70 kg/m<sup>3</sup> density, ROCDAN® 231/40; fixation of 12.5 mm thick laminated plasterboard to the 2<sup>nd</sup> structure with screws, fully sealed and installed, ready to apply the finishing.

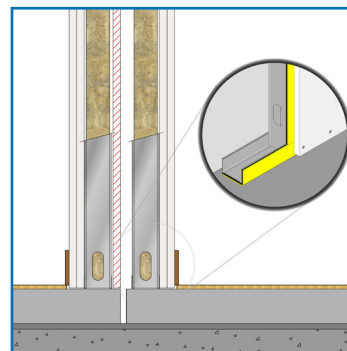
## GRAPH



## CONSTRUCTION DETAILS



Junction of separating wall with floor



Junction of separating wall with floor