

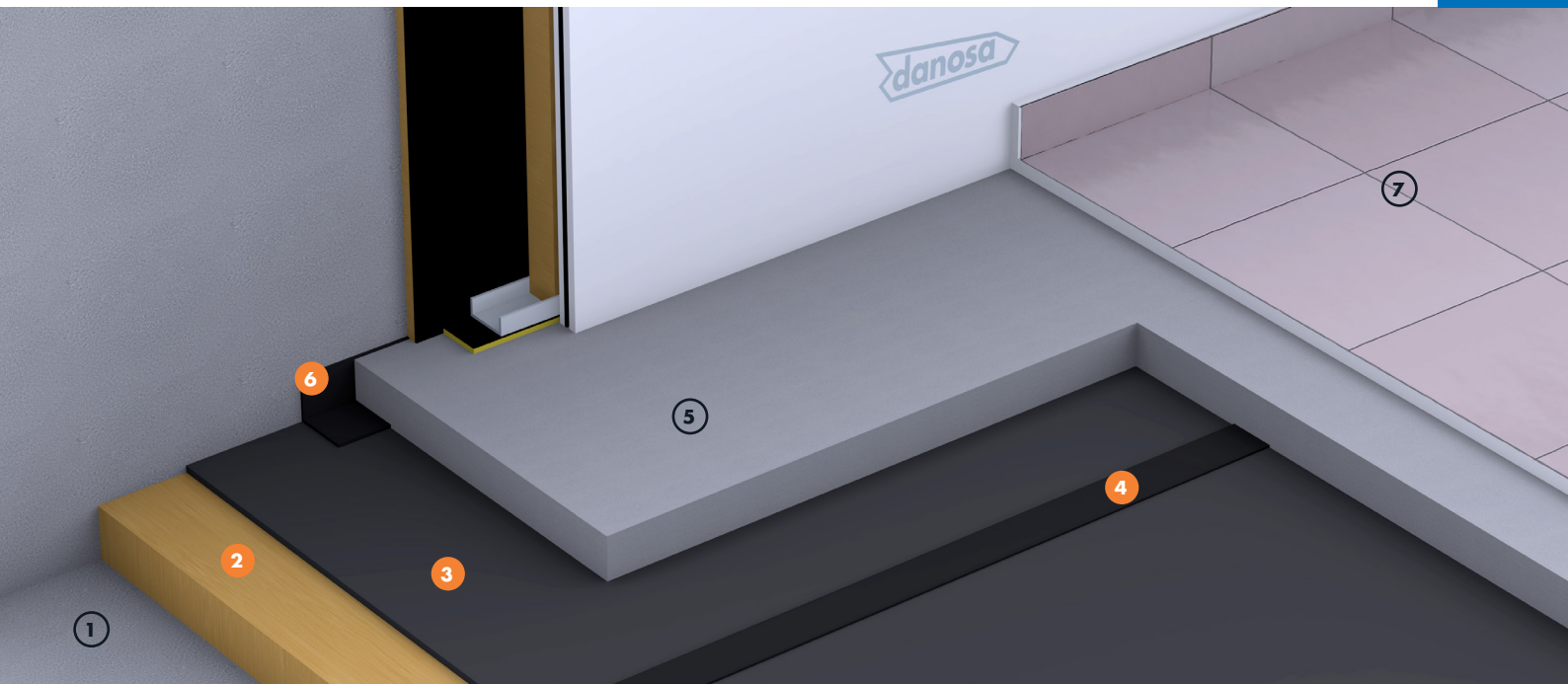
FLOATING FLOOR FOR NOISY PREMISES

Acoustic insulation: Rock wool / Cross-linked polyethylene

Finish: As required



SUF4



NOISE PROTECTION IMPACTODAN®

NOISE PROTECTION ROCDAN®

ADVANTAGES

- Airborne noise insulation towards the lower floor
 $D_nT_w > 60$ dB
- Impact noise level towards the upper floor $L'_{nT_w} < 35$ dB
- The ideal system for damping impact noise at low frequencies
- The cross-linked polyethylene sheet protects from moisture and improves the damping behavior of the system
- The mortar armed with mesh allows the entire interior partition to be built on the floating floor, reducing acoustic bridges

APPLICATION AREAS

- Premises with night time: restaurants, breweries, bars
- Supermarkets
- Bakeries
- Mechanical workshop
- Music schools: music booths
- Clubs in shopping centers

LEGEND

Floor:

- ① Slab
- ② ROCDAN® 233/30 acoustic insulation
- ③ IMPACTODAN® 10 acoustic insulation
- ④ Acoustic insulation Sealing tape 70 (Cinta de Solape 70)
- ⑤ Screed of mortar reinforced with mesh, $e = 6$ cm
- ⑥ Acoustic insulation Peripheral band 200 (Desolidarizador perimetral 200)
- ⑦ Finishing

FLOATING FLOOR FOR NOISY PREMISES

Acoustic insulation: Rock wool / Cross-linked polyethylene

Finish: As required



TECHNICAL DETAILS

Function	Product	Description	Property	Value
Acoustic insulation for impact and airborne noise	ROCDAN® 233/30	Rock wool panel of density $\geq 100 \text{ kg/m}^3$.	ΔL_w	30 dB
			ΔR_w	6-9 dBA (according to mortar thickness)
Acoustic insulation for impact noise	IMPACTODAN® 10	Chemically cross-linked and foamed polyethylene sheet.	ΔL_w	19 - 27 dB

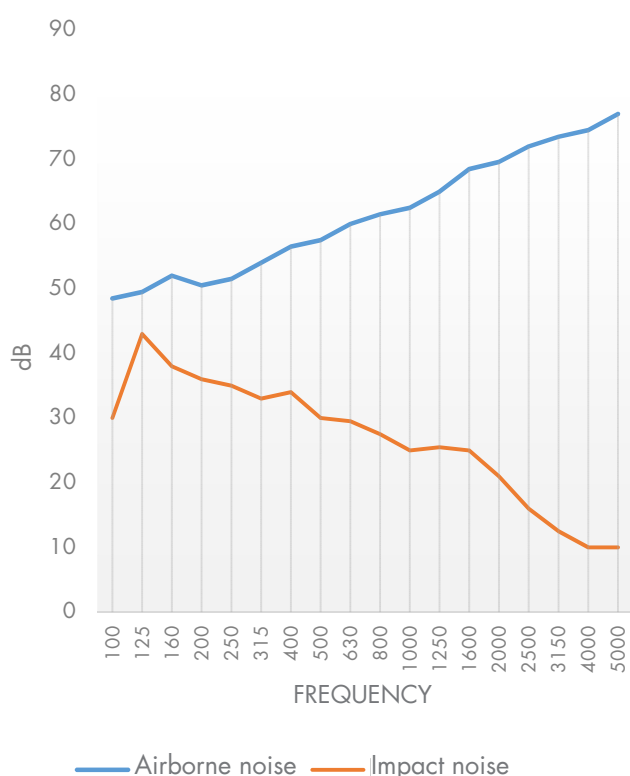
Note: This sheet is included in an acoustic box-in-box system.

APPLICATION METHOD

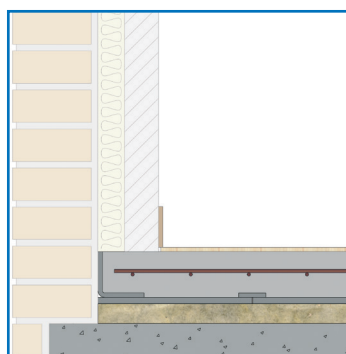
Acoustic insulation at low frequencies on floor formed by: Rock wool panel with a density of 100 kg/m^3 and a thickness of 30 mm, ROCDAN® 233/30, placed on top of the slab and protected by chemically cross-linked and foamed polyethylene sheet, 10 mm thick, IMPACTODAN® 10 fixed

to each other with self-adhesive cross-linked polyethylene tape of 3 mm thick, Overlap Tape 70 (Cinta de solape), mesh reinforced mortar with at least 6 cm thick, separated from the structure and installations by using Peripheral band tape 200 (Desolidarizador perimetral), ready to install the finishing.

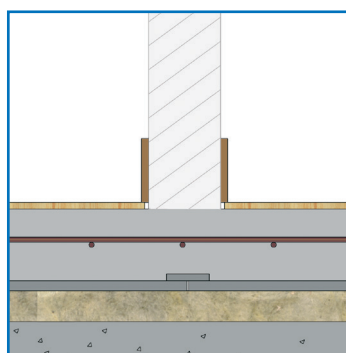
GRAPH



CONSTRUCTION DETAILS



Junction of floor with wall



Junction with interior partition wall